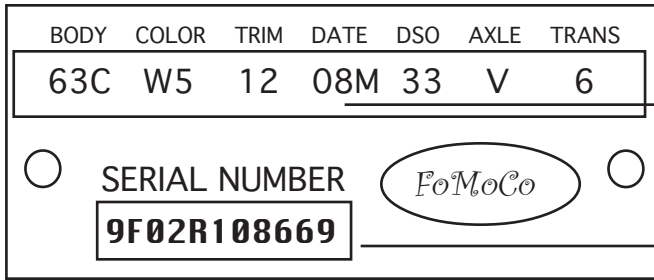


DOOR TAG DECODING



Typical door tag

→ Date codes - see page 5

- 9 = Model year. Decade is assumed
- F = Assembly plant
- 02 = Body style
- R = Engine code
- 108669 = Consecutive unit #

TRANSMISSION CODES

1	Three speed manual
2	Overdrive manual
3	Three speed manual or Ford-O-Matic 2 speed
4	Cruise-O-Matic (60/65)
4	C6 XPL (1966)
5	4 speed wide ratio
6	4 speed close ratio
6	C4 automatic (65/66)
7	Cruise-O-Matic FX (1966)
8	Cruise-O-Matic MX (1966)
C	Ford-O-Matic 3 speed
E	4 speed - Canada only
T	Cruise-O-Matic FMX-L (1968)
U	C6 Automatic XPL (67/73)
V	C4 Semi-Automatic (1970)
W	C4 Automatic XP (67/73)
X	FMX and FX Automatic (67/73)
Y	Cruise-O-Matic MX (67/69)
Z	C6 XPL Police, Special, Towing (67/73)

ASSEMBLY PLANT CODES

A	Atlanta, GA
B	Oakville, Ontario
D	Dallas
E	Mahwah
F	Dearborn/Rouge
G	Chicago
H	Lorain, Ohio
J	Los Angeles
K	Kansas City
N	Norfolk
P	Twin Cities, MN
R	San Jose, CA
S	Edsel Ford Pilot Plant
T	Metuchen/Edison, NJ
U	Louisville
W	Wayne, MI
X	Saint Thomas
Y	Wixom, MI
Z	Saint Louis

DSO CODES

UNITED STATES CODES

11	Boston, MA
12	Buffaalo, NY. 60-66 and 73
13	New York
14	Pittsburgh, PA. 60-66 and 73
15	Newark, NJ (Ford Div)
15	New York (Linc-Merc.)
16	Philadelphia, PA
17	Washington
21	Atlanta, GA
22	Charlotte, NC (Ford Div)
22	Dallas, TX (Linc-Merc.)
23	Memphis, TN. 72-73 (Ford Div)
23	Jacksonville, FL (Linc-Merc.)

CONTINUED ON NEXT COLUMN

DSO CODES - CONTINUED

24	Jacksonville, FL (Ford Div)
25	Richmond, VA
26	New Orleans (72-73) Ford Div.
26	Memphis, TN (Linc-Merc.)
27	Cincinnati, Ohio (60-64)
28	Louisville, KY
31	Buffalo, NY (Linc-Merc.)
32	Cleveland, Ohio (60-71)
33	Detroit, MI (Ford Div)
33	Cleveland, OH (Linc-Merc.)
34	Indianapolis (60-68)
34	Detroit, MI (Linc-Merc.)
35	Lansing, MI (60-71)
36	Louisville, KY
37	Buffalo, NY (67-68)
38	Pittsburgh, PA (67-68)
41	Chicago, IL
42	Fargo, ND (60-71)
42	Cleveland, Ohio (72-73)
42	St. Louis, MO (Linc-Merc.)
43	Rockford (60-73)
43	Milwaukee, WI (67-73)
44	Twin Cities, MN (60-73)
45	Lansing, MI (72-73)
45	Davenport (60-73)
46	Indianapolis, IN (69-73)
46	Twin Cities, MN (Linc-Merc.)
47	Cincinnati, OH (65-73)
48	Detroit, MI (72-73)
51	Denver, CO (60-71)
52	Des Moines, IA (60-71)
52	Dallas, Texas (72-73)
52	Los Angeles (Linc-Merc.)
53	Kansas City, MO
53	Oakland, CA (Linc-Merc.)
54	Omaha, NB
54	Seattle, WA (Linc-Merc.)
55	St. Louis, MO
56	Davenport (69-73)
57	Houston, TX (72-73)
58	Twin Cities, MN (72-73)
61	Dallas, Texas (60-71)
62	Houston, Texas (60-71)
63	Memphis, TN (60-71)
64	New Orleans, LA (60-71)
65	Oklahoma, OK
71	Los Angeles, CA
72	San Jose, CA
73	Salt Lake City, UT
74	Seattle, WA
75	Phoenix, AZ
76	Denver, CO (72-73)
81	Ford of Canada
83	Government
84	Home Office Reserve
85	American Red Cross
87	Ford Body Engineering
89	Ford Transportation
90/	Export

CONTINUED ON NEXT COLUMN

CANADIAN DSO CODES

A Prefix	Lincoln Mercury Group
B Prefix	Ford Lincoln-Mercury Group
1	Central Canada Provinces
2	Eastern Canada Provinces
3	Atlantic Canada Provinces
4	Midwestern Canada Provinces
6	Western Canada Provinces
7	Pacific Canada Provinces
8	Burlington
11-	Ford of Canada

ENGINE CODES

See pages 6-9 for more details)

A	289-4V	Hydraulic lifters
C	289-2V	Challenger special
C	429	CJ or SCJ without Ram Air
F	302-2V	1968-1/2 - 1973
H	351-2V	See page 5 (Cleveland vs Windsor)
J	302-4V	Except Boss 302
J	429	CJ or SCJ with Ram air
K	289-4V	Mechanical lifters
M	351-4V	See page 5 (Cleveland vs Windsor)
Q	428	CJ or SCJ without Ram air
Q	351 CJ	Cleveland based 351
R	428	CJ or SCJ with Ram air
S	390 GT	1967-1969
W	427-4V	
X	390-2V	1968 only