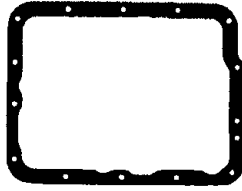


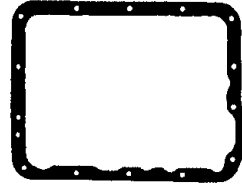
# TRANSMISSION OIL PANS



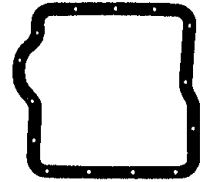
Hyrdamatic  
2 band  
12 holes



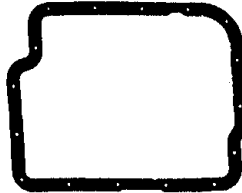
FMX  
Cruise-O-Matic  
15 holes



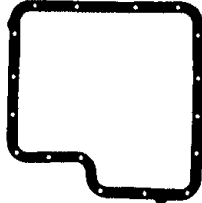
Ford-O-Matic  
Cruise-O-Matic  
15 holess



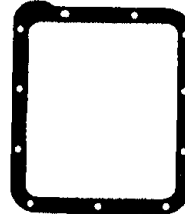
Ford-O-Matic  
2 speed  
14 holes



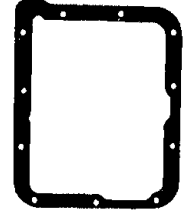
Ford-O-Matic  
16 holes



C6  
17 holes

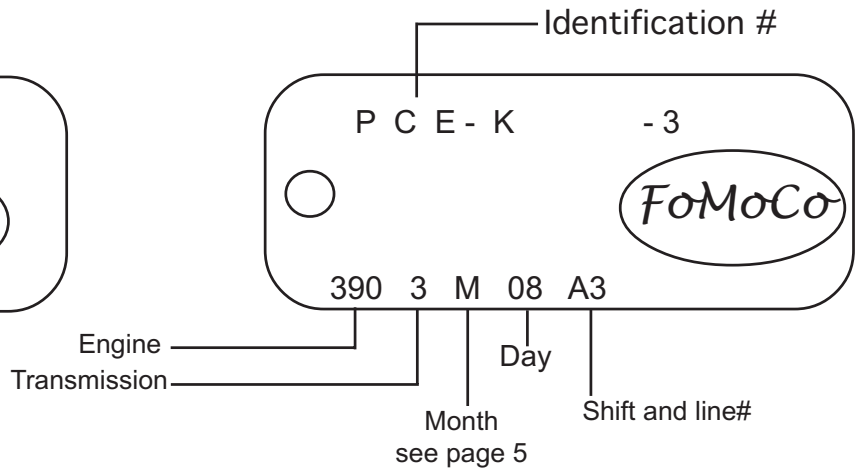
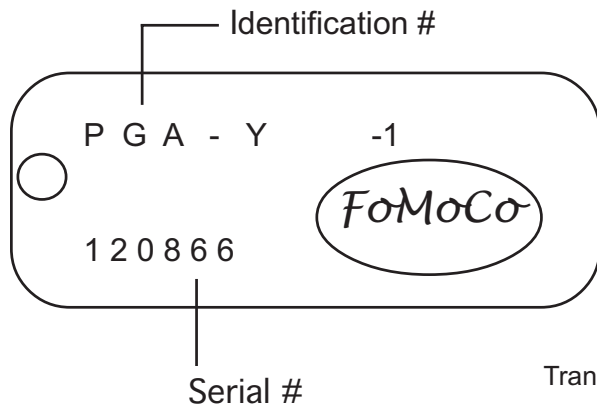


C4 (early)  
11 holes



C4  
11 holes

## TYPICAL BUILD TAGS



## GEAR RATIOS

Transmission	1st	2nd	3rd	Reverse
C4 (all)	2.46	1.46	1.00	2.20
C6 (all, except below)	2.46	1.46	1.00	2.20
C6 II (1972: 351)	2.40	1.47	1.00	2.00
C6 III (1972: 400, 429)	2.40	1.47	1.00	2.18
C6 III (1973: 400, 429, 460)	2.46	1.46	1.00	2.18
Ford-O-Matic	1.82	1.00	None	1.70

COPYRIGHT 2004  
[www.WarnerRobert.com](http://www.WarnerRobert.com)